



FEATURE EMPLOYEE: SARAH PEMBERTON

Sarah has volunteered at her former school, Lansdowne Elementary for many years. In honor of her years of service, helping at track meets and re-shelving books in the library, a plaque will be named in her honor. On June 26, Sarah will present the “Sarah Pemberton Volunteer Appreciation Award” to another deserving volunteer at Lansdowne. Sarah also volunteers every year for the Little Bits Riding classes at the Whitemud Equine Centre. Thank you Sarah for planting seeds of friendship, commitment and generosity in our community.

Danny Thomas reminds us that, “Success in life has nothing to do with what you gain in life or accomplish for yourself. It’s what you do for others.”

This appreciation award to Sarah is well deserved. Congratulations!



GOOD NEWS CORNER

Selections is involved in a PDD funded project called “School to Work”. This will involve a partnership with a high school, as well as mentoring from consultants in the field.

Person Centered Planning [PCP] is a “buzz word” in the disability field and PDD wants agencies like Selections to cultivate this concept. PCP will help students create a plan to transition from school into work, post secondary education, an apprenticeship program or into a trade. Our goal is for transitioning to be seamless and empowering for students as they learn about self-determination or decision making. Our consultants include “ENSO” from Washington State and the “Vocational and Rehabilitation Research Institute” from Calgary. More

information about our consultants is available for those interested. Both ENSO and VRRRI are involved with school to work transitioning.

GET INVOLVED: TELL YOUR STORY: CLIENTS

When you left school what were your plans for the future? Did you have work experience when you were at school? How many work experiences did you have? How long were they?

Parents: Your input is valuable and welcome. If you would like to comment on how your son or daughter made the transition from school into the work force please do so. Had your son/daughter applied for PDD/AISH funding before leaving

school? Did you have information about guardianship at this time?

Stories can be phoned in, forwarded to Selections or emailed to Margaret or Carol.

mcrac@selectionscareer.com

teasdale@selectionscareer.com

GET INVOLVED—HELP TO NAME THIS PROJECT?



**YOU LAUGH
BECAUSE I'M
DIFFERENT. I
LAUGH BECAUSE
YOU'RE ALL
THE SAME.**

Submitted by Carol McRae

SELECTIONS BOARD

PRESIDENT

MARIKA GIESEN

VICE PRESIDENT

SUSAN RICHARDSON

TREASURER

GARRY RUHL

DIRECTORS

MARCIA HOGSTEAD

JEROME KLEIN

THOMAS PULLUKATT

SELECTIONS STAFF

EXECUTIVE DIRECTOR

MARGARET TEASDALE

PROGRAM COORDINATOR

JUDY TRAVNIK

MARKETING & EMPLOYMENT

COORDINATOR

ROBBIN LINDSAY

ADMINISTRATIVE STAFF

KAREN CLARKE

KAREN REA

CAREER DEVELOPMENT

COORDINATORS

MARK BIRKLAND

LINDA CRAWSHAW

CAROL MCRAE

SHELLY-ANN MORGAN

SAMANTHA MCCLELLAN

DANIELLE NEWSOME

SELECTIONS LAUNCHES FUND DEVELOPMENT PROGRAM

Adults with developmental disabilities realize their dreams of meaningful employment and community involvement through their involvement with Selections Career Support Services:

- ◇ many clients are skilled in entry level positions; they are cooperative, willing to learn, thrive on routine and exhibit significantly lower turnover rates than average
- ◇ Selections staff provides many critical front-end recruitment activities on behalf of employers and then continues to provide ongoing support as required
- ◇ Selections clients soon become productive participants in their communities leaving isolation and dependency behind.

It takes resources to provide these services. Over the past few months, Selections' Board and staff have worked to develop a strategic plan to:

- ◇ raise the profile of adults with developmental disabilities and the niche they can fill in today's job market
- ◇ raise funds to fill the growing need for programs and services

The Board has also worked with staff to prioritize the needs and develop the case for each. Over the next few months, we will be sharing these priorities with you and asking for your support. In addition, donors are now able to make monthly gifts to Selections through their credit card or bank account. Gifts of \$10 or \$20 per month are easier to make for most people than one lump sum, and they really add up in the end to enhance services for people with developmental disabilities. Donors receive a tax receipt at the end of the calendar year that enables most of them to receive 50% of their gift back as a tax credit (this means your gift of \$120 actually costs you only \$60.00— a nice little perk to donating).

The prospect of helping more people with developmental disabilities find meaningful ways to contribute to their own self worth and to the community as a whole excites Selections' Board and staff. We hope you will join us in that excitement as this strategy unfolds.



HOW TO BUILD A COMMUNITY

TURN OFF YOUR TV
LEAVE YOUR HOUSE
KNOW YOUR NEIGHBORS
GREET PEOPLE
LOOK UP WHEN WALKING
SIT ON YOUR STOOP
PLANT FLOWERS
USE YOUR LIBRARY
SEEK TO UNDERSTAND

PLAY TOGETHER
BUY FROM LOCAL MERCHANTS
SHARE WHAT YOU HAVE
HELP A LOST DOG
TAKE CHILDREN TO THE PARK
HONOUR ELDERS
PICK UP LITTER
DANCE IN THE STREET
HAVE POTLUCKS



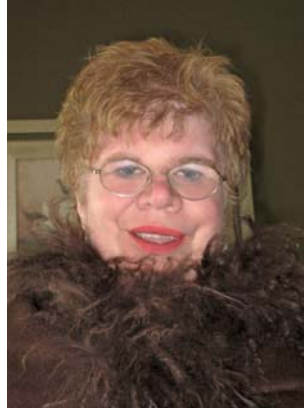
Submitted by Carol McRae

CLIENT NEWS

GOLD FOR KRISTEN HUDSON CROSS COUNTRY SKIING



Kristen Hudson participated in the Special Olympics and won gold for cross country skiing. Congratulations to Kristen!



CLIENT PICK- ME-UP

One day I was feeling sad. Linda Crawshaw and Judy Travnik did things to make me feel better. You should try these things to make you happy:

- ◇ visit your friends
- ◇ have lunch with friends
- ◇ have a make over (do your hair, makeup, nails and get all dressed up)
- ◇ cuddle and play with a puppy or kitty
- ◇ laugh a lot with your friends

By Darlene Metzger

VOLUNTEER AWARD

On March 19, 2008 Curtis Wentworth invited Judy Travnik to attend Karalots Annual General Meeting at Kingsway Legion with him. We had a wonderful smorgasbord dinner followed by the meeting. At the Annual Meeting Curtis was presented with a t-shirt and certificate and an awesome plaque. Curtis was awarded the plaque for over 250 Volunteer hours at the Karalot Store.



WAY TO GO CURTIS!!!

BABY NEWS



Kerrie and Ollie Melnychuk are proud to announce the birth of Kerrie's niece and nephew and Ollie's grandchildren.....twins Brielle and Brendyn .

Could anything be sweeter and more precious than to love and hold two babies.





#205, 4209-99 Street
Edmonton, AB
T6E 5V7

Phone: 780-461-5270
Fax: 780-463-8944
E-mail: selectus@telus.net

We're on the web:
www.selectionscareer.com
Selections is a not-for-profit registered charity. Charitable registration number BN#129778353 RR0001

Selections Annual General Meeting will be held on September 14th, 2008 at 11:00 a.m.—3:00 p.m. at the Rundle Family Centre in Rundle Park. We look forward to seeing all our friends.

Invitations are enclosed with this newsletter.



BACARAT CASINO VOLUNTEERS

SELECTIONS WOULD LIKE TO EXTEND A THANK YOU TO ALL THE VOLUNTEERS OF OUR BACARAT CASINO THIS YEAR. WE RAISED \$78, 653.09.

- | | | |
|--------------------|-------------------|-----------------|
| Eugene Badorek | Francine Berube | Stephen Bingham |
| Gregory Clarke | Karen Clarke | John Forsdick |
| Marika Giesen | David Gledhow | Carolyn Hay |
| Allan Herbert | Archie Herbert | Marcia Hogstead |
| Melissa Hunt | Vissie Hunt | Gina Kennedy |
| Eric Labrie | Alice Lepine | John Lindsay |
| Samantha McClellan | Carol McRae | Zan Owsley |
| Ron Pierce | Thomas Pullukatt | Angela Rea |
| Karen Rea | Susan Richardson | Janice Ruhl |
| Ken Saunders | Jeanette Scammell | Huguette Schatz |
| Margaret Teasdale | Ryan Teasdale | Vivian Tront |
| Mary Lou Veeken | | |



SOBEY'S & REGAL FUND-RAISING

Selections has Sobeys Gift Certificates \$25 & \$50 available. If you are interested in purchasing please call Karen at 780-461-5270. We also have Regal products and if you would like to see a Regal Catalogue just contact Karen and she will be happy to send you one.

MEMBERSHIP RENEWAL

Membership payments are now due. Membership form is enclosed with newsletter.

Just a reminder that we are going to be selling poinsettias and wreaths just in time for Christmas. We will be sending out information in November.

